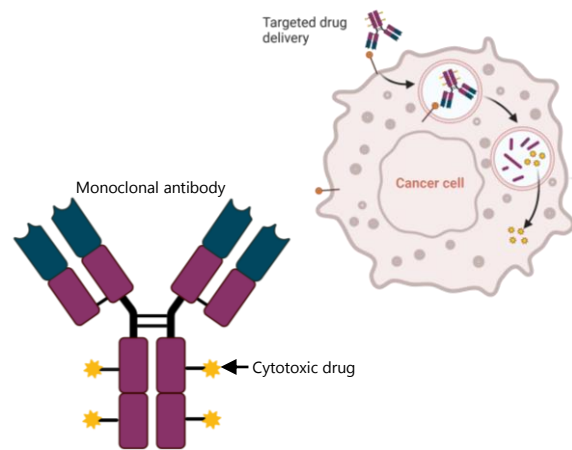


Development of an Antibody-Drug Conjugate (ADC) targeting MMP-14

A targeted solution for effective treatment of cancers with unmet needs

Mission

To provide **effective targeted treatment** for **aggressive hard-to-treat cancers** and improve the treatment landscape for patients with urgent unmet needs.



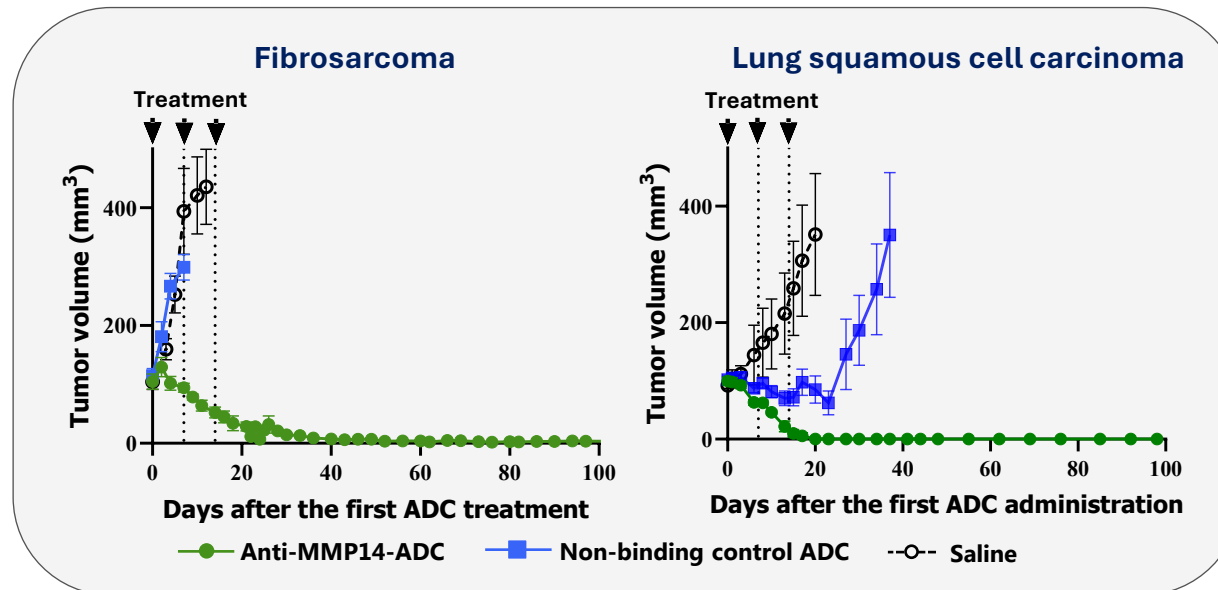
Our solution

- New and **unique target**: MMP14
- Target expression in a **wide range of solid cancers**.
- **Precision dual-attack** of tumors enabled by MMP14 expression in both cancer cells and cancer-associated fibroblasts.
 - **Increased efficacy**
 - **Overcoming resistance**

PoC

Promising efficacy studies *in vitro* and in mouse cancer models representing target indications (**glioblastoma, triple negative breast cancer, sarcoma** and **lung squamous cell carcinoma**):

- Sarcoma and lung squamous cell carcinoma: Complete tumor regression and no tumor recurrence during follow-up period



Team



Niels Behrendt
PhD, D.Sc.
Professor

Alba Perlado
M.Sc.
PhD fellow

Kirstine Nørregaard
PhD
Senior Scientist

Lars Engelholm
PhD
Associate Professor

Stage:

Pre-clinical development

IP: PCT application (Dec 2025)

Seeking

- Insights from **oncologists**, in particular within primary brain cancer or brain metastasis, sarcoma, lung and breast cancer.
- **Academic collaborations** in particular experts in **orthotopic tumor models** and **antibody optimization**
- Experts in drug development (antibodies and ADCs)

Contact:

Kirstine Sandal Nørregaard, PhD
kirstine.sandal@finsenlab.dk