

A Novel Therapy to Protect Kidney Function in Diabetic Patients

Mission

To develop a novel targeted therapy to **protect kidney function in diabetic nephropathy**, a major cause of kidney failure affecting up to one-third of people with diabetes.

Solution

By targeting dysregulation of the **complement system** — a key driver of kidney inflammation and damage — our approach addresses an underlying cause of the disease rather than its symptoms.

Our lead candidate MBDAF combines two linked protein fragments: one selectively recognizes diabetes-induced changes in kidney tissue, while the other inhibits complement system activity to reduce inflammation and protect kidney function.

Current Status

- 1) Strong in vitro data demonstrating potent complement inhibition (manuscript in preparation).
- 2) Collaboration with a CRO to conduct proof-of-concept efficacy studies in a T1D mouse model.
- 3) Applying for funding for follow-up studies in rodent models to further evaluate efficacy, pharmacology, and safety prior to IND-enabling safety studies.

IP Status

PCT application has been filed (PCT/EP2025/067346).

Looking For

- Funding to complete non-GLP and GLP preclinical studies.
- Advisors within: regulatory, CMC, and lead candidate optimization.

Project leader

Beatrice Linnea Christina Fagerang
Dept. Clinical Immunology 7631
University of Copenhagen/Rigshospitalet
Beatrice.linnea.christina.fagerang@regionh.dk

Project coordinator

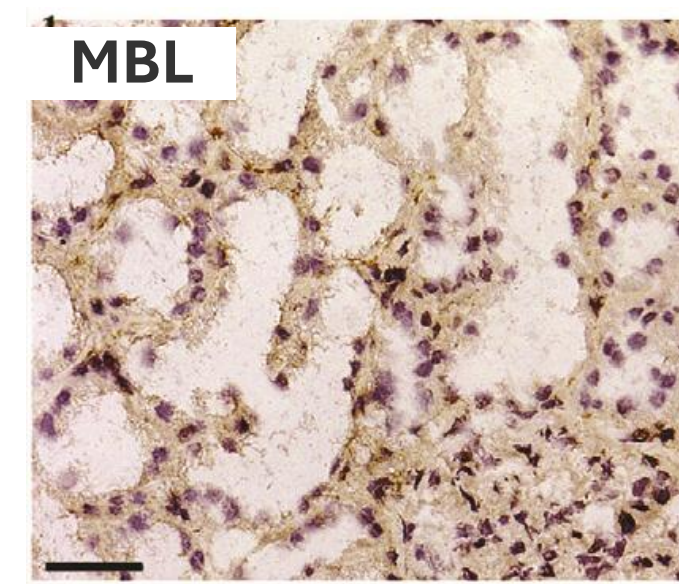
Peter Garred, professor and group leader

Project members

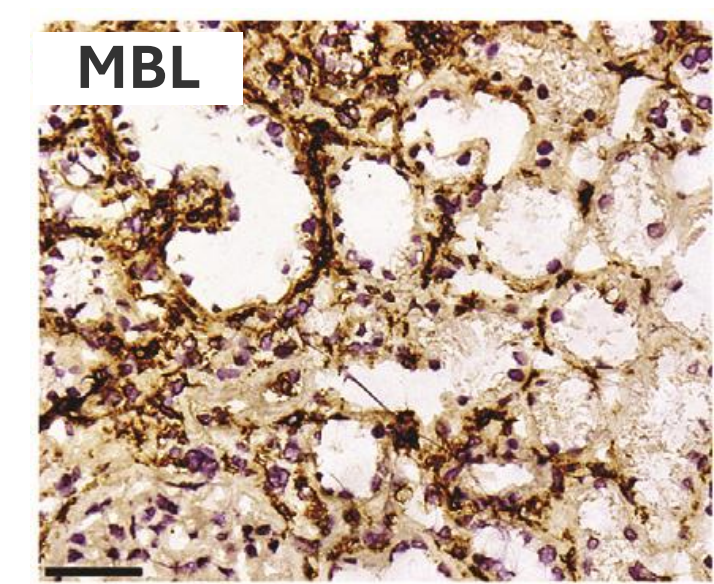
Miroslava Bayarri, business consultant
Rafael Bayarri-Olmos, scientific consultant

Complement drives pathology in diabetic nephropathy

The recognition molecule MBL binds to human diabetic kidneys (PMID: 29604259)

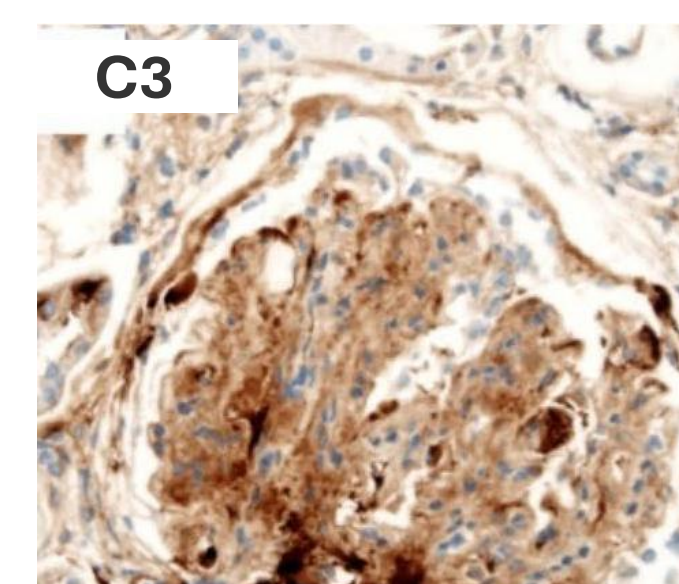


Healthy control

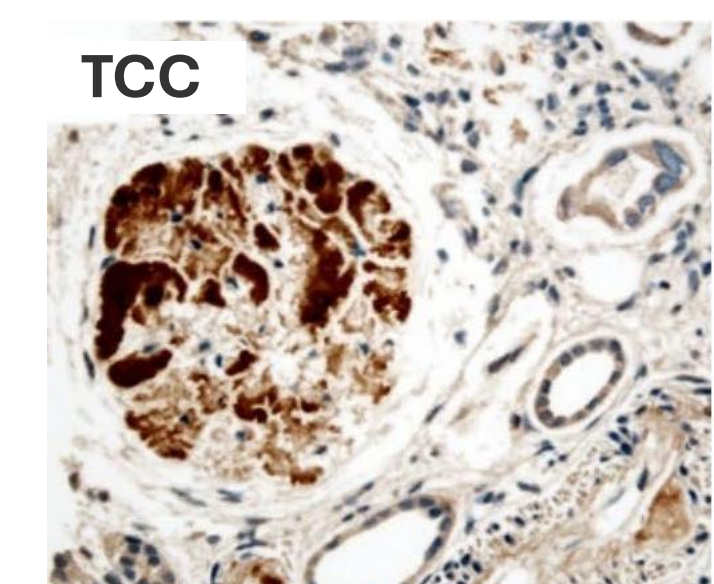


Diabetic nephropathy

Complement activation in human diabetic kidney biopsies (PMID: 38996754)

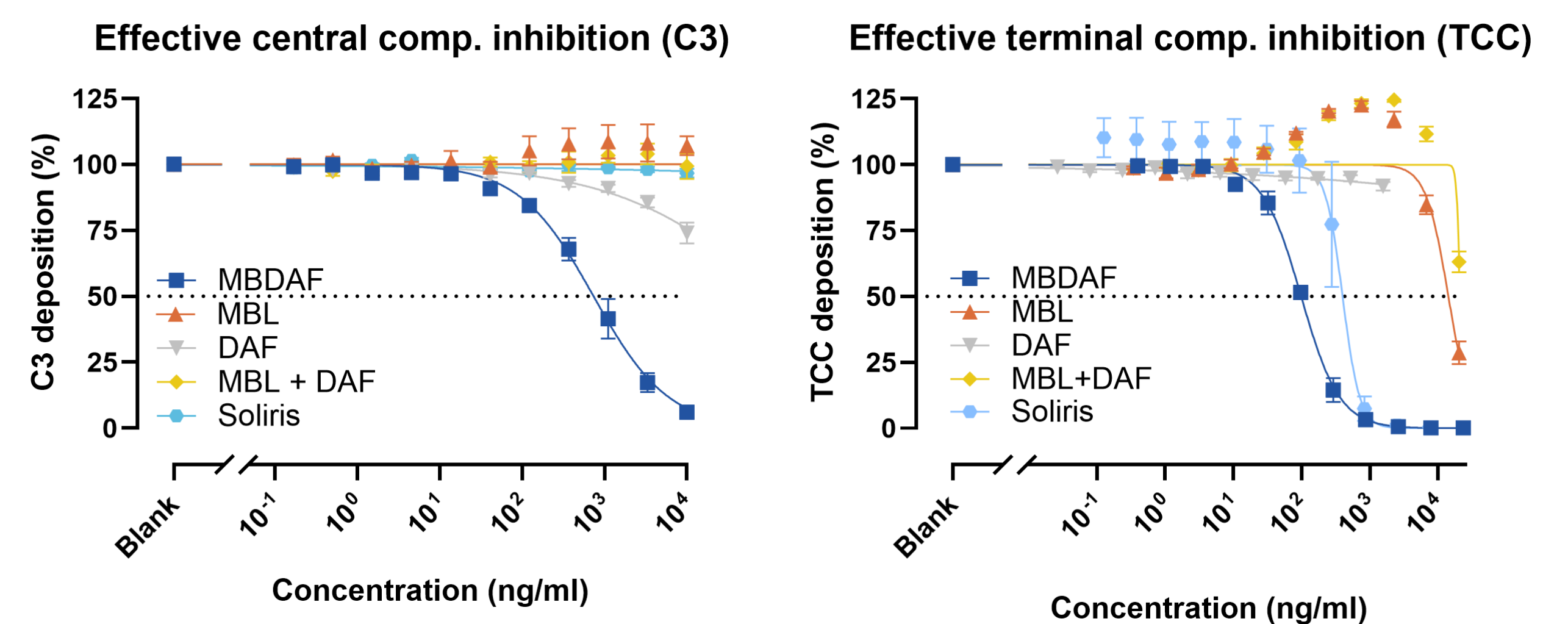


Diabetic nephropathy

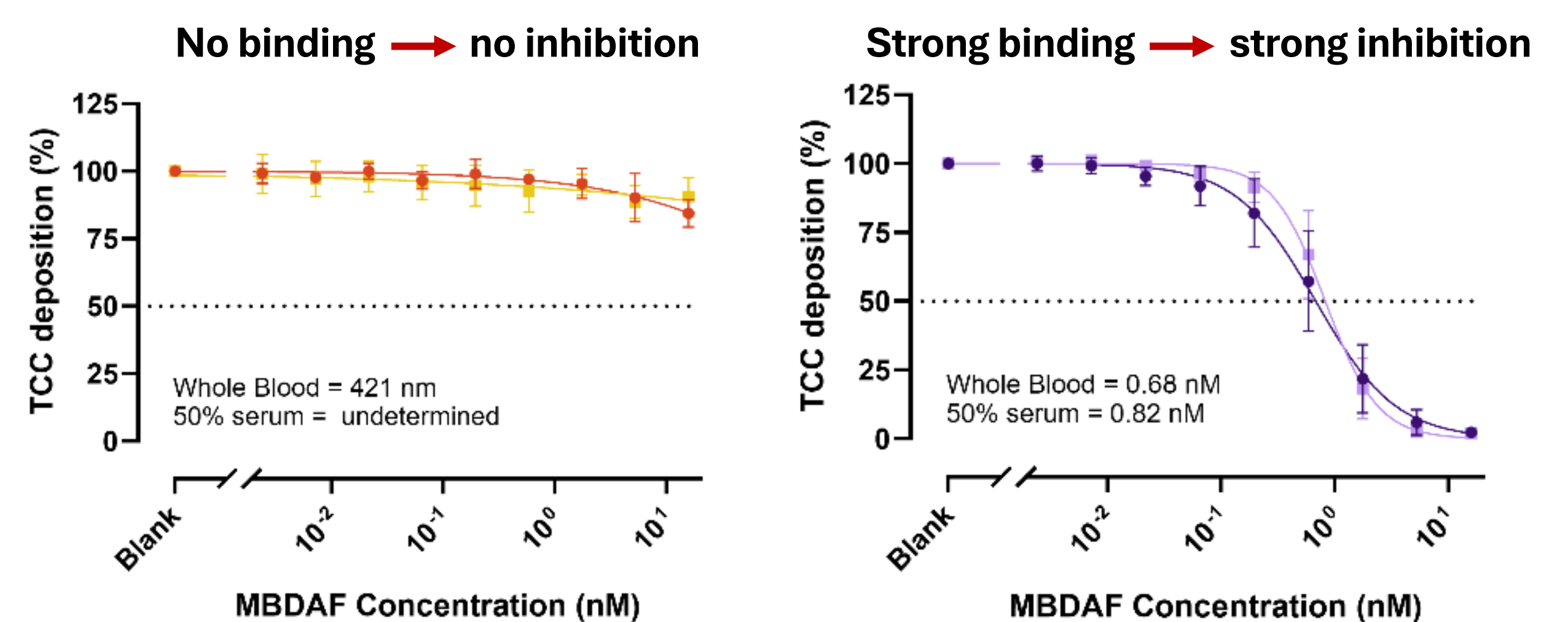


Diabetic nephropathy

Superior potency by double blockade of complement



Activity targeted to surfaces



Explore the science
behind



Contact us

